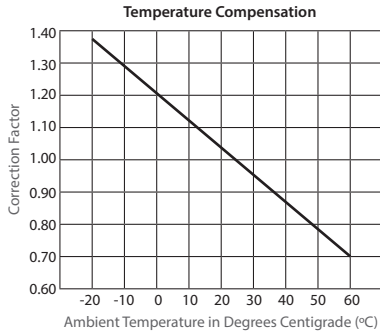


TRACK MOUNT CIRCUIT BREAKER SWITCHES

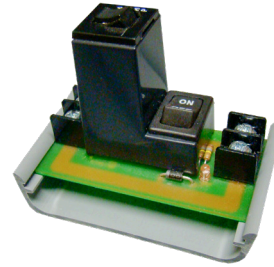
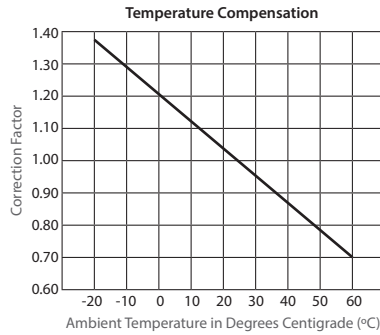
PSMN01S SERIES

Switch, 2 Position Maintained, On/Off, 4 Amp or 10 Amp Circuit Breaker, 120 Vac, 2.75" Track Mount



PSMN24S SERIES

Switch, 2 Position Maintained, On/Off, 4 Amp or 10 Amp Circuit Breaker, 24 Vac, 2.75" Track Mount



PSMN01S SERIES

Model #	Circuit Breaker
PSMN01SB4	4 Amps
PSMN01SB10	10 Amps

PSMN24S SERIES

Model #	Circuit Breaker
PSMN24SB4	4 Amps
PSMN24SB10	10 Amps

SPECIFICATIONS

- Operating Temperature:** -30 to 140° F
- Humidity Range:** 5 to 95% (noncondensing)
- Circuit Breaker:** 4 Amp or 10 Amp
- Dimensions:** 1.35"H x 2.75"W x 2.00"D1/2.50"D2
- Housing Detail:** See **Housing H** in housing guide for dimensions
- Origin:** Made of US and non-US parts
- Track Mount:** MT212-2 Mounting Track Provided
- Approvals:** UL Listed, UL916, C-UL, CE, RoHS

OVER CURRENT / SHORT CIRCUIT PROTECTION AND SWITCHING

